

TRAVELING BEAM DEVICE

101-B0169-030

101-B0169-035



TRAVELING BEAM DEVICE DATA LOGGING INLCUDED

101-B0169-030 3.5M AUST STANDARDS

101-B0169-035 3.0M

Auto Data Logging included

The 3.0 or 3.5 meter long Auto-graphic Recording Travelling Beam Device is used to check for any irregularities in both concrete and bituminous road surfaces.



A sensing unit comprising a wheel connected to an indicator provides a magnification of 4:1.

Deviation of the surface from a straight-line is shown on a scale calibrated in increments of 2 mm in the 0-10 mm range and 5 mm increments in the 10-25 mm range.

A dye-marker is fitted which may be used to identify suspect areas. Outrigger wheels provide mobility on site.

The device is supplied as three sub-assemblies which are quickly assembled on site.

The Travelling Beam is supplied fitted with an autographic recorder providing a permanent record of the surface profile.

The recorded data can be transferred to the computer via sd card.

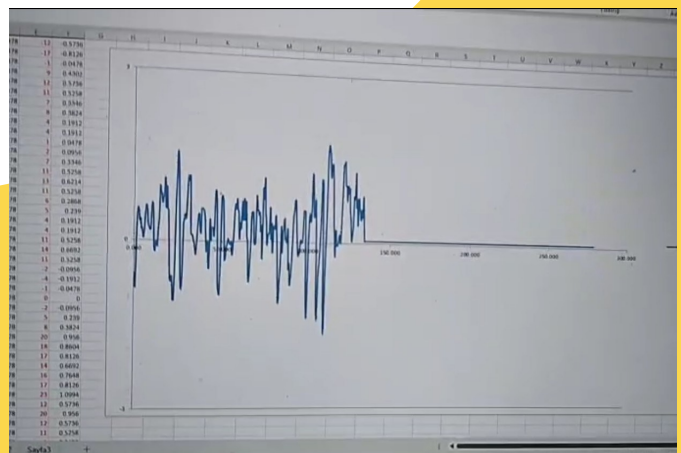
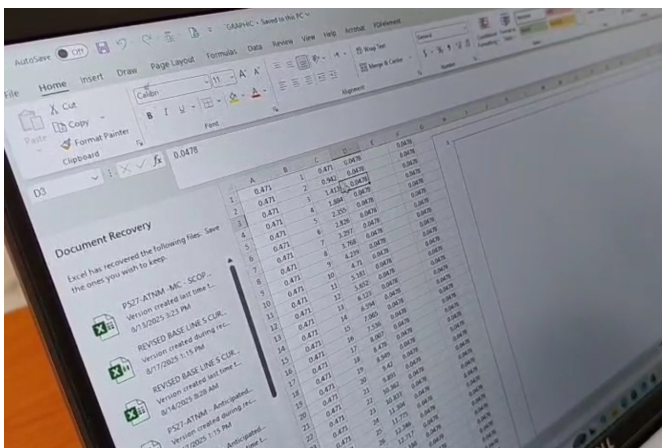
Optional accessory

101-B0169-039 - Wooden box should be ordered separately.

Transport dimensions

330x1800x600

Mass 55kg (excluded transport box)



LE CHATELIER WATER BATH

101-E0149-020

Standard: EN 196-3, EN ISO 9597, BS 6463, NF P15-432,
UNE 80102, AS4489.4.2

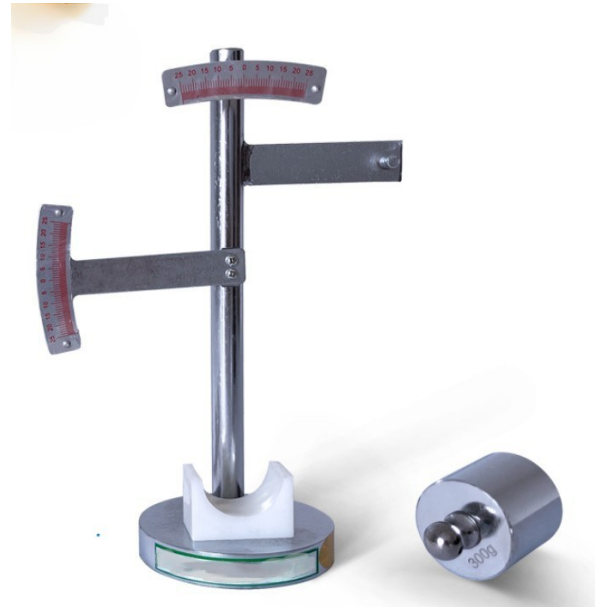
MatCivTest
MATERIAL CIVIL TEST EQUIPMENT

Optional Accessories:

101-E0149-021 Le Chatelier Extendibility Frame

101-E0149-022 Le Chatelier Mould

101-V0038-905005006 GLASS PLATE 50x 50x 4 SET OF 5



101-E0149-021 Extendibility Frame

101-V0038-905005006 Glass plates



101-E0149-022 Le Chatelier Mould

